

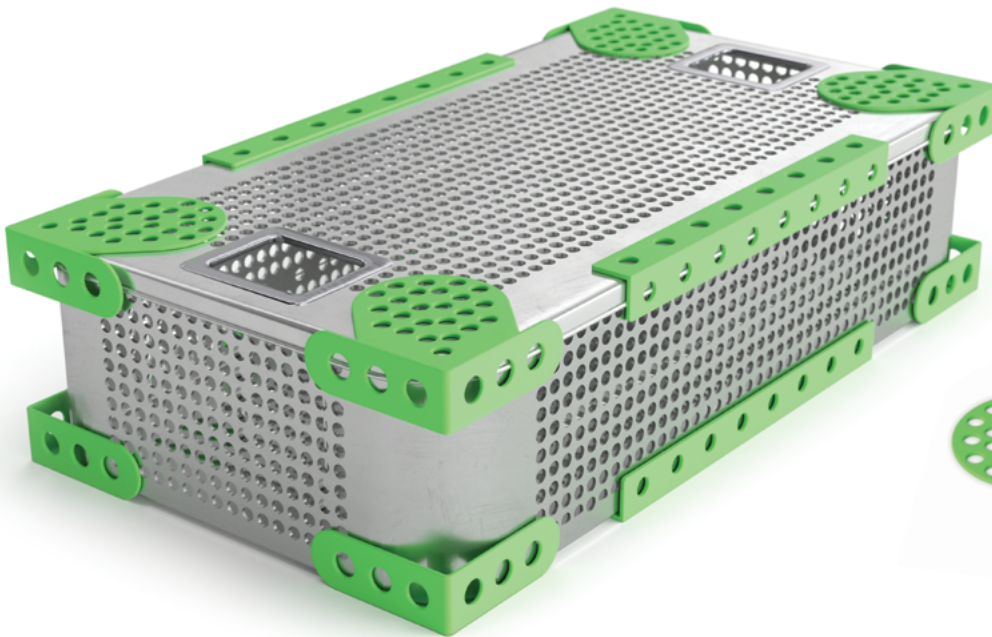


# Sterile Processing **Solutions**

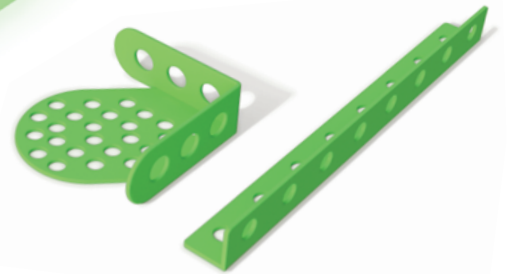


# GreenGuard | Tray Protectors

Reusable Solutions for Surgical Tray Protection



#40478  
Corner Protector



#40479  
Straight-Edge  
Corner Protector

## Simplify Tray Protection

- Ideal for heavy trays, both steam and Sterrad compatible, works equally well on square or round-corner trays

## Reduce Reprocessing Time

- Greater airflow decreases drying time and eliminates moisture retention

## Increase Patient Safety

- Imperfections in sterile wrapping provide opportunities for contamination, thereby increasing the risk of SSI.<sup>3.7</sup> Because sterile wrap perforations are often overlooked in the Operating Room, prevention of tears or perforations is critical.<sup>3.8</sup>

## Protect the Environment

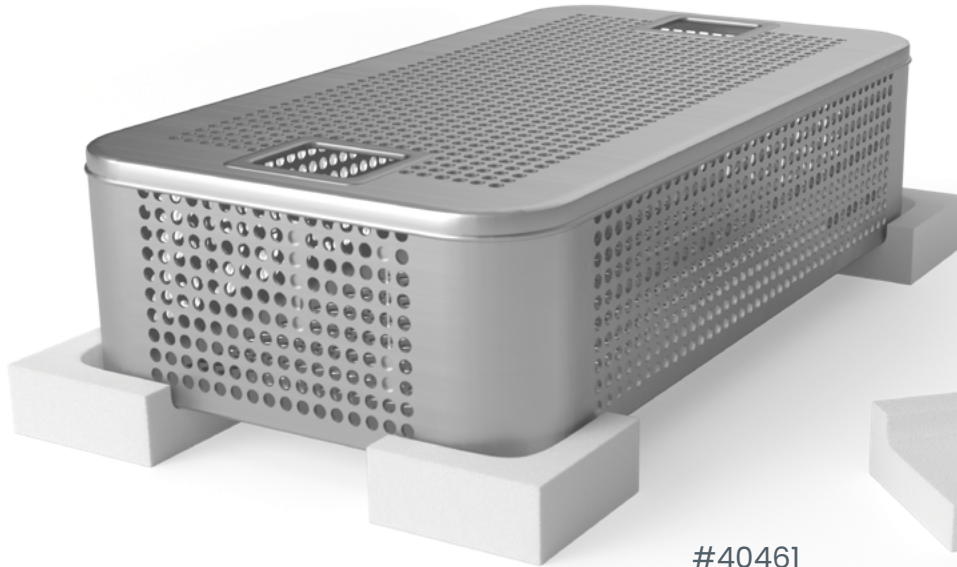
- Reusable, recyclable, and reduces the need for extra sterile wraps

// "Minimum re-sterilization "wait cost" for the OR [is] \$1,342 (per incident)... Instrument availability and reliability are essential to a well-run, cost-effective OR environment."<sup>3.9</sup>

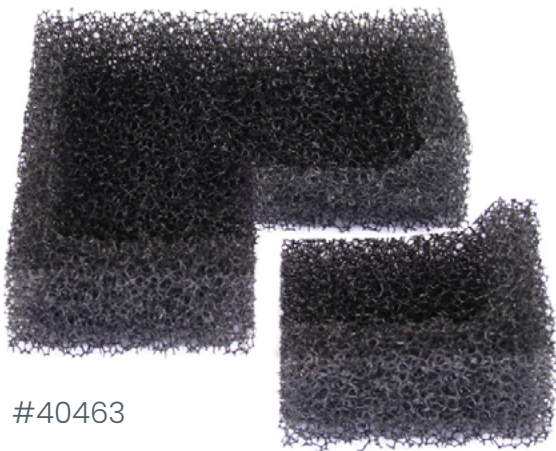
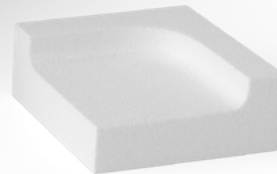
# Single-Use Corner Protectors

Single-Use Solutions for Surgical Tray Protection

Prevent Tears & Moisture  
In Sterile Wraps



#40461



#40463

- Create a soft barrier to protect sterilization wrap from sharp corners; prevent holes and/or tears
- Eliminate unnecessary costs created by contaminated surgical trays (Average savings: \$58 per contaminated tray) - Galetta et al Feb 2021
- Avoid double-wrapping trays
- Cost-effective solution

## #40461

1.25" thick  
100 sheets/case (4 squares | 6" x 6" sheet)

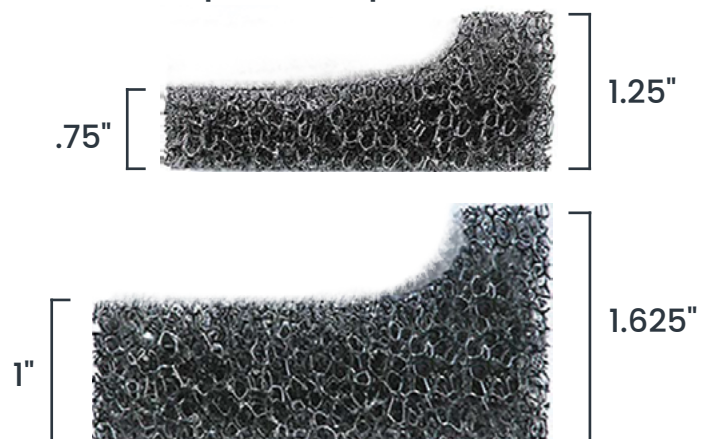
## #40462

Reticulated 1.25" thick  
100 sheets/case (4 squares | 6" x 6" sheet)

## #40463

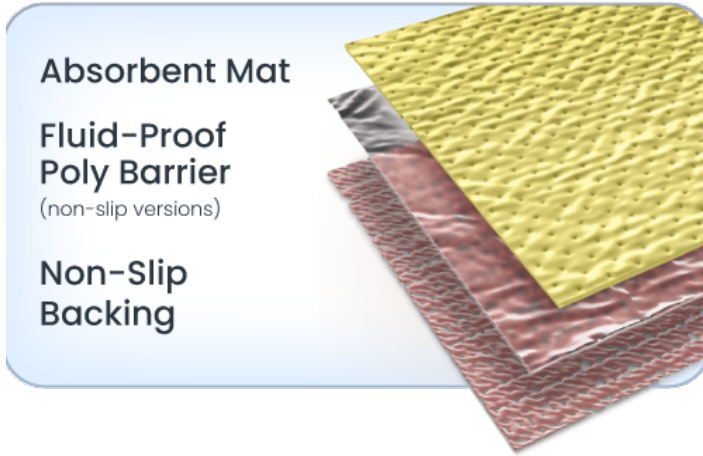
Reticulated 1.625" thick  
80 sheets/case (4 squares | 6" x 6" sheet)

### Depth Comparison



# Camel Mats™ | Absorbent Floor Protection

Solutions for Maintaining Clean, Dry Hospital Floors



## Help Eliminate Slips, Trips, and Falls

- Keep hospital floors clean and dry
- Single-use design improves infection control and reduces cross-contamination
- Save money - reduce turnover time
- Non-slip backing for secure placement



## Camel Mat - **Standard** Absorbent



Prod #	Size
80510	24" x 32"
80520	32" x 40"

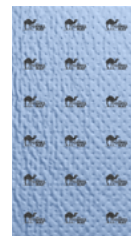
## Camel Mat - **Ultra** Absorbent



Prod #	Size
80512	24" x 32"
80522	32" x 40"
80526	32" x 56"
80524	48" x 80"
80525	*48" x 80"

\*w/Cutout

## Camel Mat - **Max** Absorbent



Prod #	Size
80532	24" x 32"
80531	32" x 40"
80530	32" x 56"

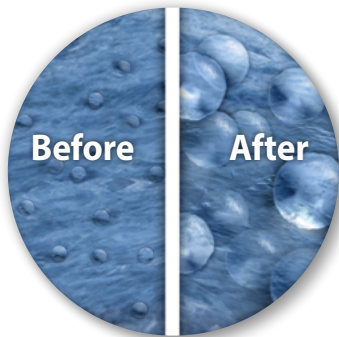
# Camel Mats™ | Absorbent Floor Protection

Solutions for Maintaining Clean, Dry Hospital Floors



## Non-Drip Disposal

The Camel Mat Max Absorbent mat features a polymer material that enhances absorption and prevents fluid from dripping



## Advanced Fluid Retention Technology

Fluid-absorbing polymer traps liquid for easy and convenient clean up



#80512



#80548

## Camel Cord Cover™

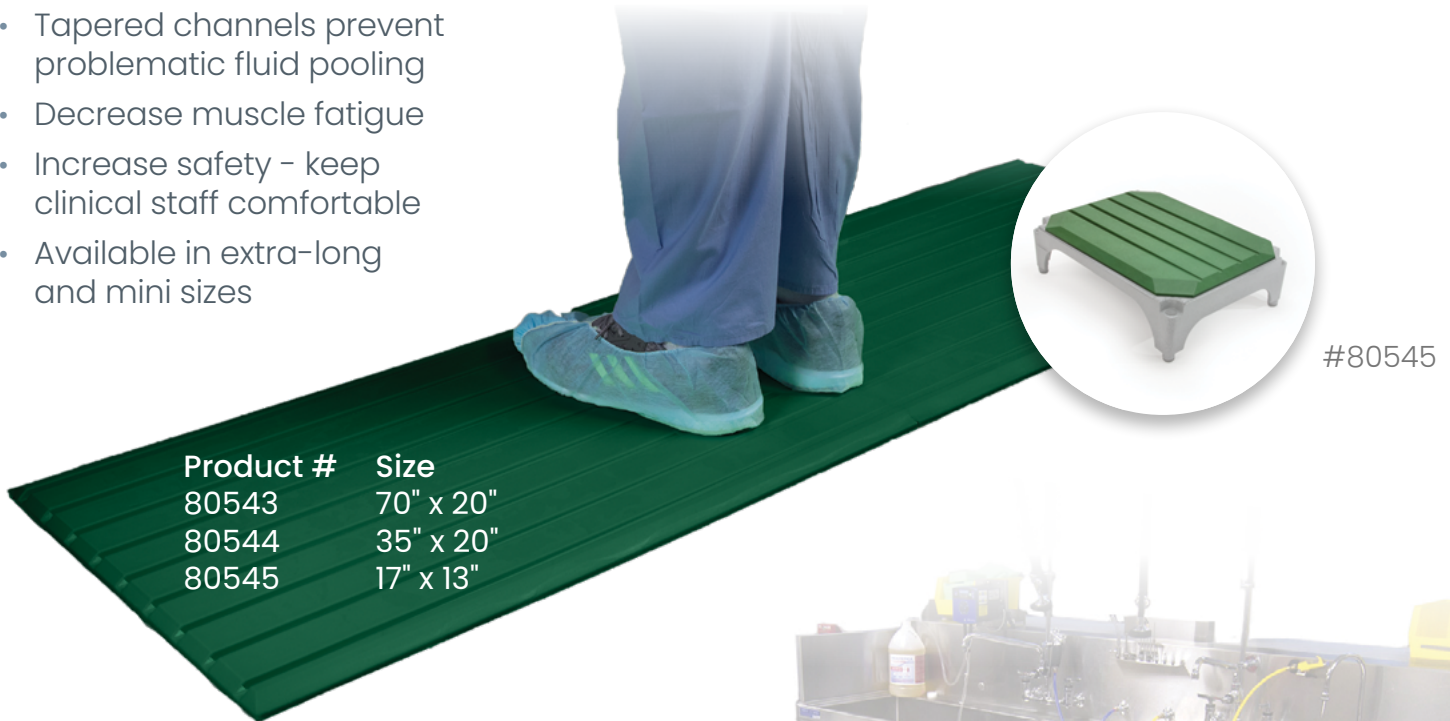
Two peel strips on the back reveal residue-free adhesive that secures the cover to the floor. This feature safely secures cords and decreases the risk of trips and falls.

Available in two sizes.

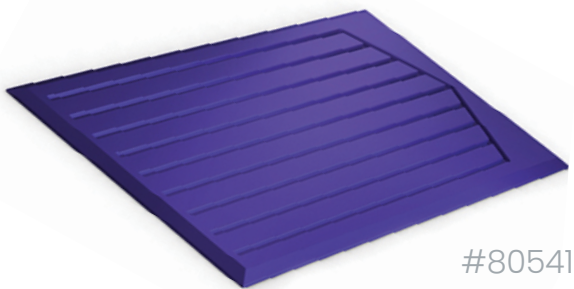
# Soft Step™ | Anti-Fatigue Floor Mats

Increasing Safety and Comfort for Hospital Staff

- Tapered channels prevent problematic fluid pooling
- Decrease muscle fatigue
- Increase safety - keep clinical staff comfortable
- Available in extra-long and mini sizes



Product #	Size
80543	70" x 20"
80544	35" x 20"
80545	17" x 13"



“Prolonged standing during surgical procedures poses a high risk of causing musculoskeletal disorders, including back, leg, and foot pain, which can be chronic or acute in nature.”

## Fitted Camel Mat

Extend the usable life of Soft Step mats by incorporating single-use, absorbent covers

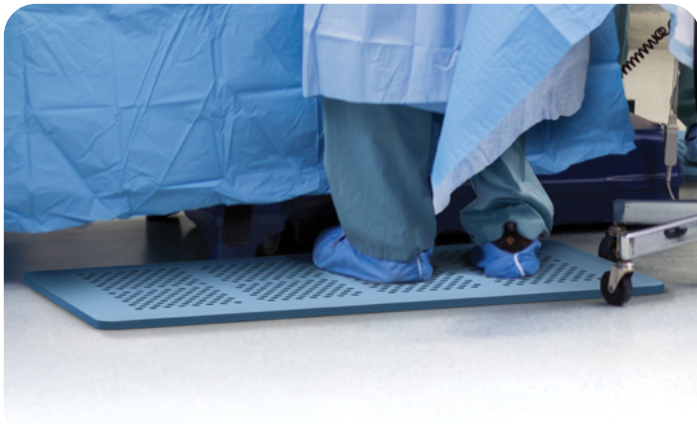
- Available in two sizes:  
#80536 - 39" x 24"  
#80537 - 74" x 24"

# The Oasis™ | Anti-Fatigue Floor Mats

## Increasing Safety and Comfort for Hospital Staff

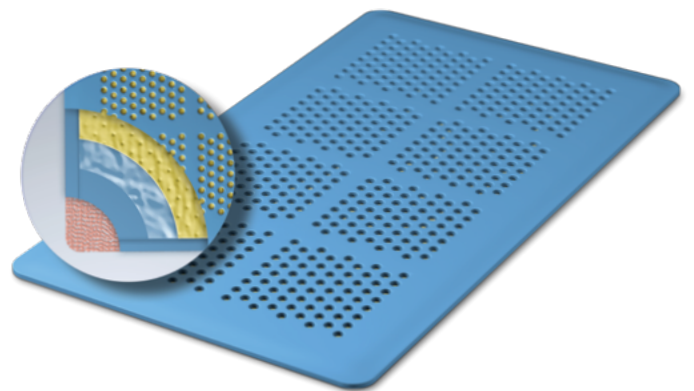
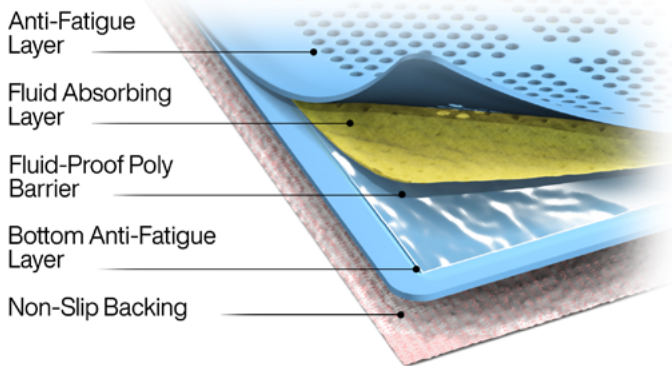
The Oasis™ Mat deters the onset of muscle fatigue and helps keep hospital floors clean, dry, and safe.

At the core of the Oasis, between two layers of shock absorbing, closed-cell foam, is the same ultra-absorbent material featured in the Camel Mat™. An impermeable barrier prevents fluid from reaching the hospital floor, while a non-slip backing keeps the mat securely in place.



- Maximize performance by decreasing muscle fatigue
- Improve infection control by reducing exposure to contaminants
- Increase safety by minimizing possibility of injury from slips and falls
- Save money by reducing turnover time

### Stacking up the Protection



**XODUS MEDICAL**  
Making Surgery Safer™

702 Prominence Drive  
New Kensington, PA 15068,  
United States

xodusmedical.com  
info@xodusmedical.com  
Tel: 1+724-337-5500

FDA REGISTERED  
ISO 13485 CERTIFIED

LITBRCS003 R14 5/14/2026



MADE IN THE  
**USA**



Scan to View  
Full Citations



Follow Us on  
Social Media