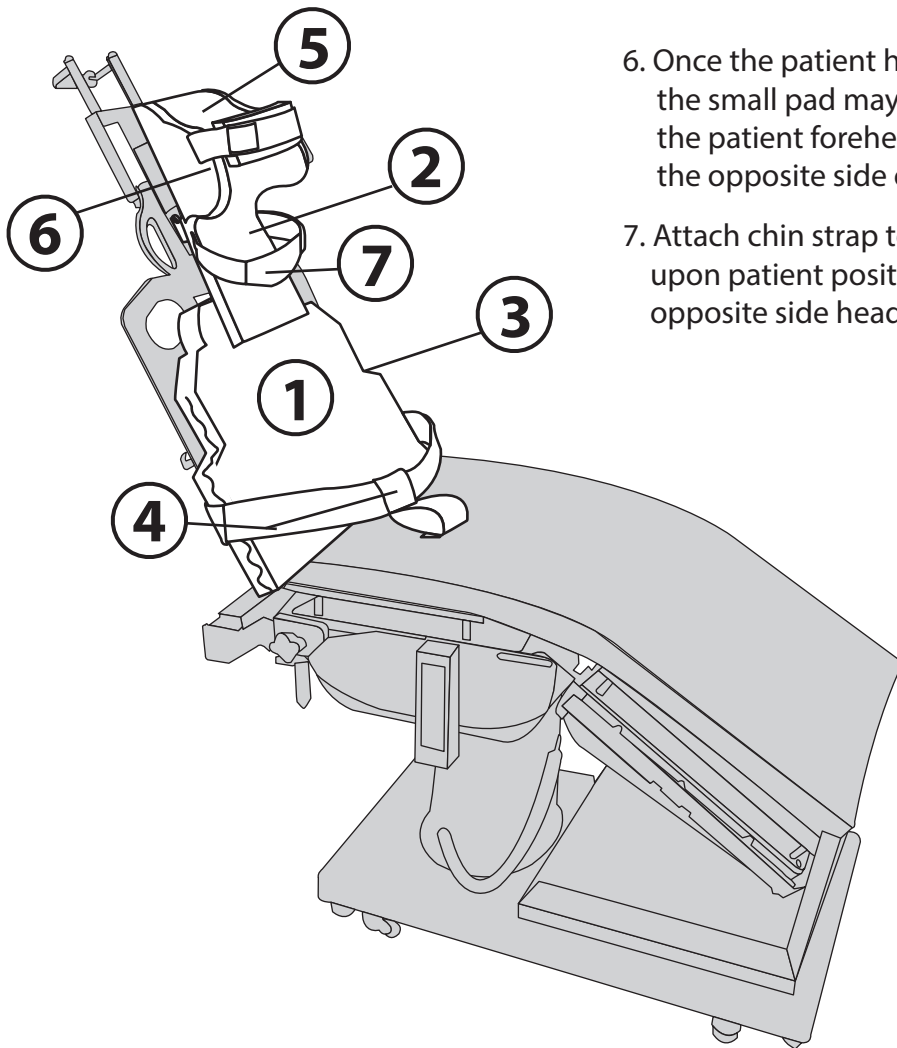


IFU: Schlein Table (kit may not contain all products)

1. Place large schlein pad on the back rest support frame.
2. Place schlein pad inside the head rest support frame.
3. Attach waist belt strap to back rest frame through slotted opening.
4. Slide the arm strap harness onto the waist belt strap through the smaller opening of the waist belt strap; upon patient positioning, secure the waist belt strap to the opposite side of the back rest frame through the slotted opening.
5. Attach head strap to the head rest frame upper slot opening; upon patient positioning secure the head strap to the opposite side of the head rest frame upper slot opening.



6. Once the patient has been transferred to the Schlein Table, the small pad may be placed under the head rest strap on the patient forehead prior to securing the head rest strap to the opposite side of the head rest frame upper slot.
7. Attach chin strap to the head rest frame lower slot opening; upon patient positioning, attach the chin strap to the opposite side head rest frame lower slot opening.



ISO 13485 CERTIFIED
FDA REGISTERED

LITIFUSF002 R1 3/27/18

Pittsburgh, PA USA • Tel: 724-337-5500
Fax: 724-337-0555

xodusmedical.com
info@xodusmedical.com

