

INSTRUCTIONS FOR USE

Pink Pad[®] – Air Assist

NOT FOR USE in Trendelenburg or Reverse Trendelenburg

DESCRIPTION:

The Pink Pad Air-Assist is a single use system for use in surgical procedures.

PRIOR TO USE:

Visually inspect both sides of the Pink Pad Air-Assist.

INDICATIONS

- Patients who are unable to assist in lateral transfer, repositioning and / or boosting.
- Patients whose weight or girth poses a potential health risk for the caregiver(s) responsible for repositioning and/or laterally transferring said patient.

INTENDED USE:

The Pink Pad Air-Assist is a non-sterile single-use device intended for patient transfer and repositioning. Patient transfer / repositioning / boosting can be facilitated before and / or after the procedure where the patient's weight might place staff at risk for injury. This device can ease the patient transfer from pre-op to the O.R. Table, and following the procedure from the O.R. Table to PACU. The patient transfer system safely positions high BMI patients while protecting against HAPI formation and nerve damage, during surgery.

The Pink Pad Air-Assist features a skin friendly design allowing the product to stay under patients during surgery.

CONTRAINDICATIONS

This device is not designed, sold, or intended for use except as indicated.

KNOWLEDGE AND INTENDED SETTING

Device intended for use by trained healthcare personnel. Device use limited to surgical setting and operating room in a hospital or surgery center.

CLINICAL BENEFITS:

To aid hospital facilities in providing a safe and effective method in transferring patients while minimizing the risk of pressure injuries.

INTENDED USER

This device is intended for use by trained healthcare professionals only.

INTENDED CARE SETTINGS

Hospitals and Ambulatory Surgery Centers (ASC).

PRECAUTION

- The Pink Pad Air-Assist should be used in accordance with the instructions for use and any contraindications, warnings or precautions provided by the manufacturer of the associated instrument.
- Before using Pink Pad Air-Assist, ensure that the O.R. table pad is securely affixed to the O.R. table and is clean and free of residue.
- Be sure to follow your facility's policies and guidelines for frequency of patient monitoring. Check skin for integrity and proper circulation. Product is to be used by licensed medical professional only.
- Care should be taken to safeguard The Air-Assist from exposure to prep solutions.
- Healthcare personnel must verify that all caster brakes have been engaged prior to transfer.
- Minimum of two support personnel required for transfer, and additional support as needed based on hospital protocol.
- Never leave the patient unattended when the device is inflated.
- Use this product only for its intended purposes, as described in this manual.
- Only use attachments and/or accessories that are authorized by Xodus Medical.
- Never attempt to transfer a patient on an uninflated Pink Pad Air-Assist.
- Follow hospital protocol for safe disposal of product following use.
- Power Lift Unit must be turned-off prior to the start of the procedure.
- Do not operate Power Lift Unit intraoperatively.
- **Notice to the User and/or patient that any serious incident that has occurred in relation to the device should be reported and the competent authority of the Member State in which the user and/or patient is established, as well as Xodus Medical and its Authorized Representative.**

*WARNINGS:

- The Air-Assist is designed and tested to support patient loads up to 800 lbs (363 kg).
- After patient positioning and prior to surgical procedures, ensure that the Air-Assist is deflated and secured to the O.R. Table per instructions.
- Before use, make sure the air hose is securely fastened in the Pink Pad Air-Assist inlet
- Air-Assist Power Lift is not for use in the presence of flammable anesthetics or in a hyperbaric chamber or oxygen tent.
- Route the Air-Assist Power Lift power cord in a manner to ensure freedom from hazard.
- Avoid blocking the air intakes of the Air-Assist Power Lift.
- Avoid electric shock. Do not open Air-Assist Power Lift container.
- This device was designed, test and manufactured for single patient use only. Reuse or reprocessing of this device may lead to its failure or subsequent injury.
- Reprocessing of this device may create the risk of contamination and patient infection.
- Do not reuse or reprocess this device.
- Follow Air-Assist Power Lift IFU for correct usage.
- Please visually inspect for breaches of packaging integrity prior to use. Do not use if damaged, opened, or breached.

DISPOSAL

After use, the Pink Pad® Air-Assist should be disposed of in accordance with hospital policy.

TECHNICAL SPECIFICATIONS:

- Materials of manufacture include:
 - » Polyurethane foam, synthetic adhesive, nylon material and strap
- Shelf Life – indefinite

STORAGE, TRANSPORT, AND OPERATIONAL CONDITIONS

- The Pink Pad Air-Assist should be stored in a clean, dry location at room temperature prior to use. Avoid prolonged exposure to elevated temperatures.
- During ALL handling and storage, assure that the pad is flat. Do not roll or fold the pad.

ATTENTION

- To avoid unwanted movement healthcare personnel must position themselves on either side of the patient at all times during positioning and repositioning.
- Red handles are designed to move the Air-Assist and patient when the system is inflated

BLACK AND WHITE STRAPS ON EITHER SIDE OF THE PINK PAD MUST BE SECURED TO OPERATING ROOM TABLE RAILS PRIOR TO PROCEDURES.

PREPARATION AND USE

PATIENT TRANSFER

1. Patient should preferably be in a supine position.
2. When transferring a patient from a bed surface to an OR table surface: Place the Air-Assist underneath patient using a log-rolling technique and secure body strap without over tightening. Lower the bed rails following inflation and prior to transfer.
3. When transferring a patient from an OR table surface to the bed surface, assure Air-Assist is centered under the patient prior to inflation. Raise bed rails following transfer of patient and deflation of Air-Assist.
4. Insert the hose nozzle into either of two hose entries at the foot end of the Air-Assist and snap into place. (*Refer to Figure B*)
5. Plug the Air-Assist Power Lift power cord into an electric outlet.
6. Ensure that transfer surfaces are as close as possible and lock all wheels.
7. If possible, transfer from a higher surface to a lower surface.
8. Turn on the Air-Assist Power Lift.
9. With the Air-Assist fully inflated and a healthcare personnel on each side of the Air-Assist and one located at the foot-end, use the red handles of the Air-Assist to push or pull the Air-Assist at an angle, either head-first or feet-first. When halfway across separate surfaces, opposite caregiver should grasp closest red handles and pull to desired location. Ensure healthcare personnel at foot end guides patient's feet during the transfer. (*Refer to Figure C, D, E*)
10. Ensure the patient is centered on receiving equipment prior to deflation.
11. Turn off the Air-Assist Power Lift. This will deflate the mattress. (If transferring to a stretcher, raise the bed/stretcher rails).
12. Disconnect the air hose from the Air-Assist.
13. Secure mattress to OR table using black & white straps.

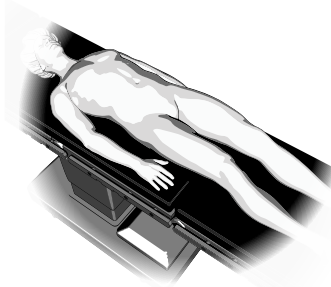


Figure A

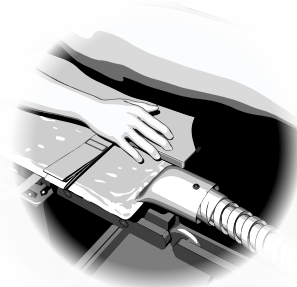


Figure B

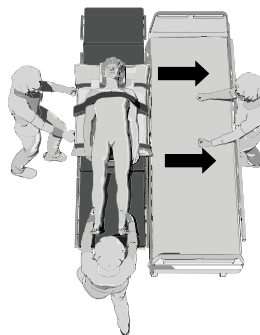


Figure C

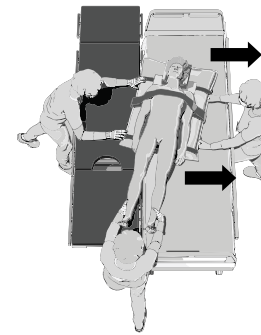


Figure D

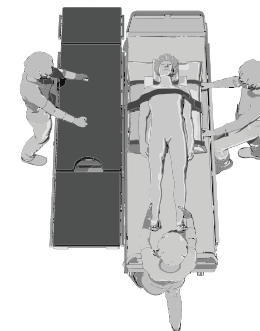
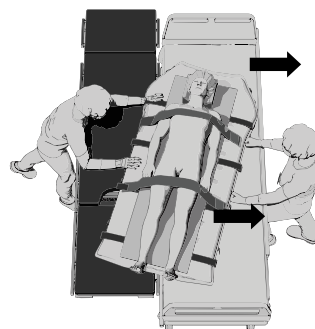


Figure E



(Figure F,
EXT Version Shown)

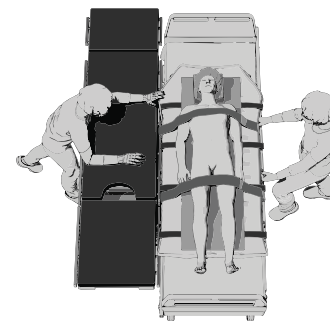
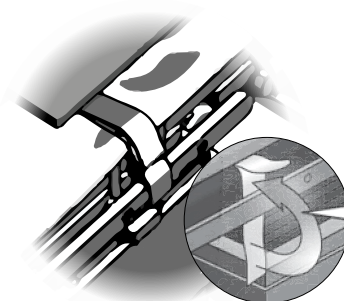


Figure G

ATTACHING STRAPS TO TABLE RAIL

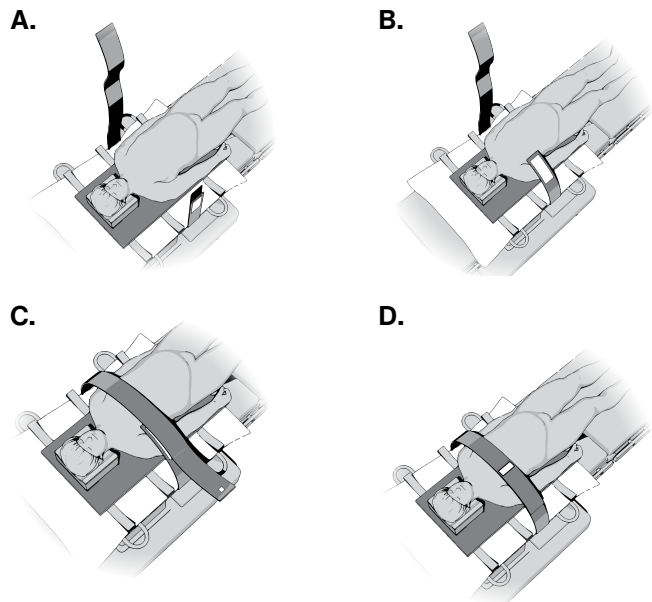
1. **Attach the white and black hook & loop straps of The Pink Pad Air-Assist to the surgical table rails by looping under the rail, as shown, and affixing the ends of the hook & loop to each other. Make sure to position the strap at a table rail mounting post in a "figure eight" configuration to have the strap in front of and behind the table rail mounting post, if possible.**

1.



BODY STRAP

1. Tuck arms as shown or per hospital protocol.
2. Attach the body strap as follows:
 - A. Make sure the patient is center aligned on the Air Assist.
 - B. Place Strap A over the patient's body.
 - C. Place Strap B across the patient's body, connecting to the hook & loop patch on Strap A.
 - D. Fold the excess from Strap B, back onto itself attaching to the small hook and loop square.



ONE-STEP ARM PROTECTORS

1. Place the One-Step™ Arm Protector beneath the patient's arm, centering the arm protector laterally with straps facing down and inward toward the patient's torso.

The pad should extend above the elbow and just below the fingertips. The hand should be positioned in a natural anatomical position with the palms facing inward so as not to impinge upon the ulnar nerve.

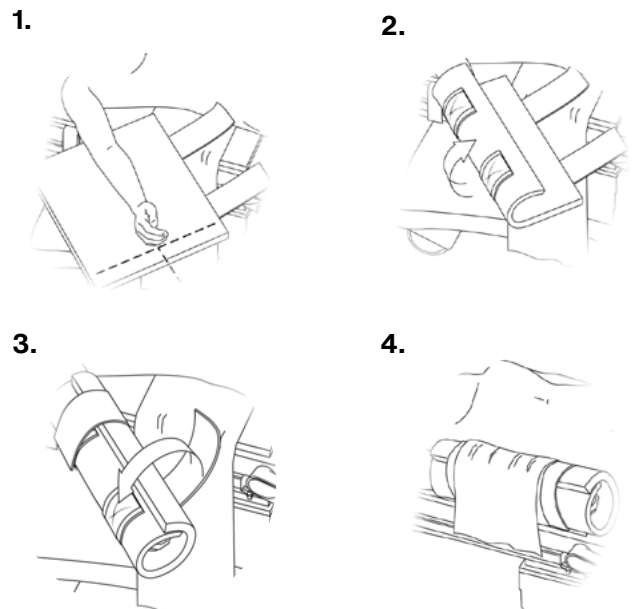
The One-Step™ will protect the arm, ulnar nerve and fingers when adjusting the stirrups, while permitting easy access to the fingers and IV site. It will also safeguard against tissue breakdown.

2. Wrap the outer portion of the protector over the arm
3. Next, wrap the remaining portion of the arm protector over the arm and secure the straps to the corresponding Velcro™ patches as shown. Ensure that the One-Step™ Arm Protector is firmly wrapped around the patient's arm.

At this stage, check for proper alignment of the wrist and fingers. Also, inspect pulse oximeters, IV lines, etc. to ensure proper placement. Accessing these patient monitors is simple and repeatable.

4. Repeat steps 1-3 for the remaining arm. Once the One-Step™ protectors are in place, wrap the lift sheet per hospital protocol, tucking it between the patient and The Pink Pad®.

Tucking methods vary according to hospital protocol. Lift sheets should not be tucked between The Pink Pad® and the O.R. table mattress.





Medical Device



Non-Sterile



Caution, Consult
Accompanying
Documents



Do Not
Re-use



Not Made with
Natural Rubber
Latex



Do Not Use If
The Package Is
Damaged Or
Opened



xodusmedical.com/eifu

Consult Electronic
Instructions for Use



Emergo Europe
Westervoortsedijk 60
6827 AT Arnhem
The Netherlands



MedEnvoy Switzerland
Gotthardstrasse 28
6302 Zug
Switzerland



XODUS MEDICAL
Making Surgery Safer™

702 Prominence Drive
New Kensington, PA 15068,
United States

xodusmedical.com
info@xodusmedical.com
Tel: 1+724-337-5500

FDA REGISTERED
ISO 13485 CERTIFIED



MADE IN THE
USA

LITIFUAA002 R4 6/2/2026